

# LIGHT INSIDE ONETRACK

Dati tecnici - L32 - Biemissione

*L32 - Biemission - Technical data*



A.A.G.

**STUCCHI**

Follow your illumination

# DATI TECNICI RANGE DI PRODOTTO

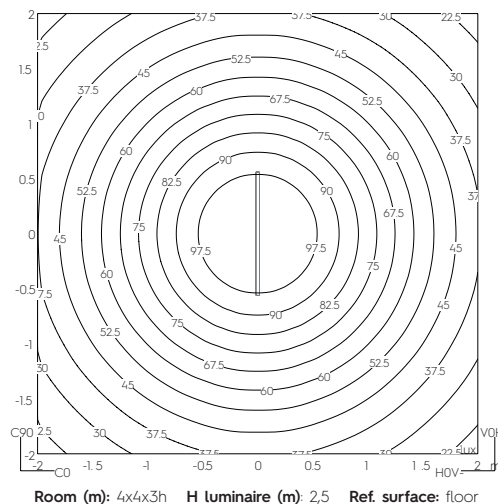
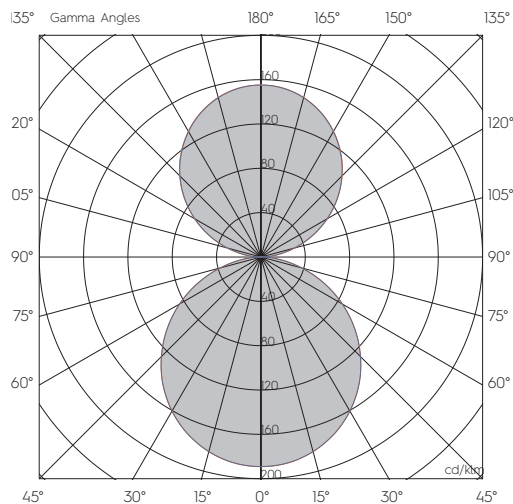
## PRODUCT RANGE TECHNICAL DATA

Modulo singolo / Fila continua BIEMISSIONE / *BIEMISSION Single module / in row use*

OPAL

[mm]	n°. LED Mod	[K]	I LED [mA]	FLUSSO NOMINALE [lm] NOMINAL FLUX [lm]	FLUSSO REALE [lm] REAL FLUX [lm]	POTENZA [W] POWER [W]	POTENZA LED [W] POWER LED [W]	V <sub>F</sub>	CRI	SDCM	LIFETIME [Khr]
846*	3+2	3000	450+350	2129,4+1638	1461+1062	34,1	28,5	-36	≥90	≤3	>50Khr L90B5
1121/1126	4+3	3000	600+525	2839,2+2457	1948+1593	46,9	40,1	-36	≥90	≤3	>50Khr L90B5

\*Non disponibile in fila continua / *In row use version not available*



A. A. G.  
**STUCCHI**  
Follow your illumination

# DATI TECNICI RANGE DI PRODOTTO

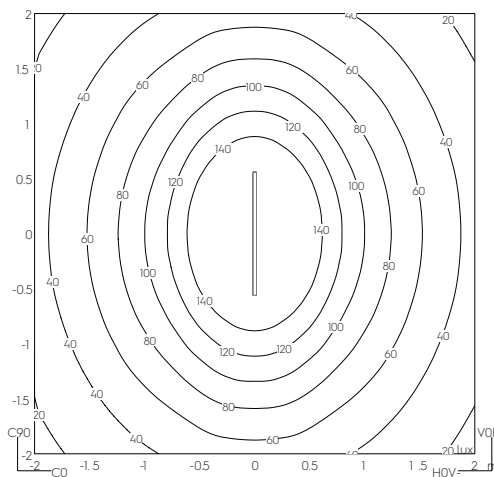
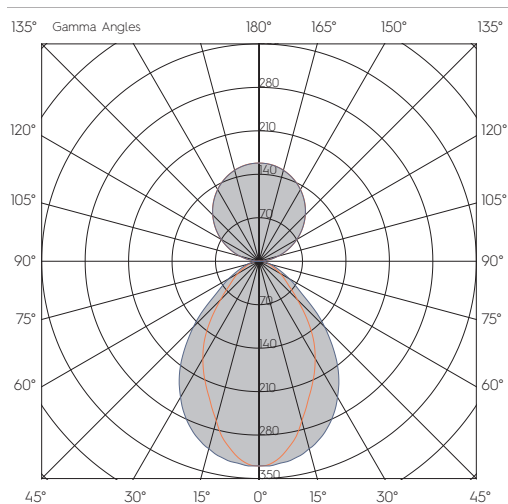
## PRODUCT RANGE TECHNICAL DATA

Modulo singolo / Fila continua BIEMISSIONE / *BIEMISSION Single module / in row use*

**MICRO**

[mm]	n°. LED Mod	[K]	I LED [mA]	FLUSSO NOMINALE [lm] NOMINAL FLUX [lm]	FLUSSO REALE [lm] REAL FLUX [lm]	POTENZA [W] POWER [W]	POTENZA LED [W] POWER LED [W]	V <sub>F</sub>	CRI	SDCM	LIFETIME [Khr]
846*	3+2	3000	450+350	2129,4+1638	1410+1062	34,1	28,5	-36	≥90	≤3	>50Khr L90B5
1121/1126	4+3	3000	600+525	2839,2+2457	1880+1593	46,9	40,1	-36	≥90	≤3	>50Khr L90B5

\*Non disponibile in fila continua / *In row use version not available*



Room (m): 4x4x3h H luminaire (m): 2,5 Ref. surface: floor



A. A. G.  
**STUCCHI**  
Follow your illumination

# DATI TECNICI RANGE DI PRODOTTO

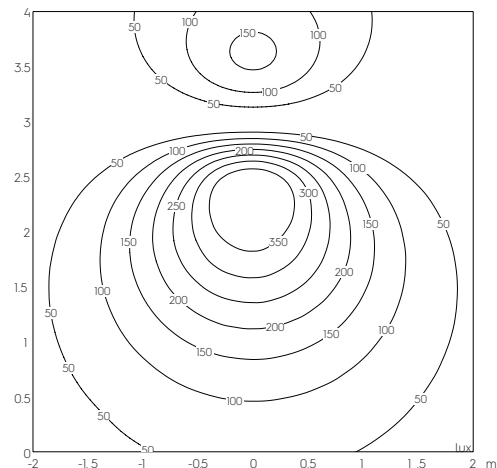
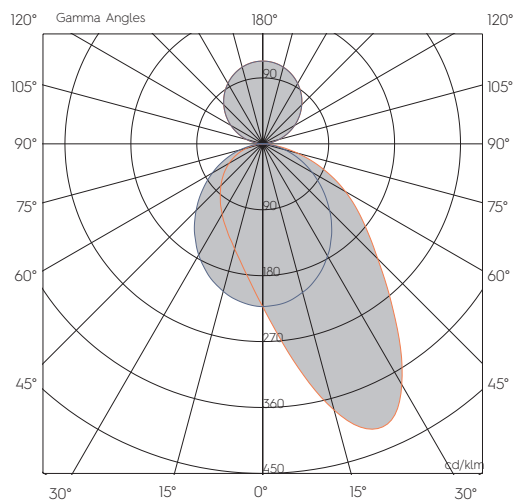
## PRODUCT RANGE TECHNICAL DATA

Modulo singolo / Fila continua BIEMISSIONE / *BIEMISSION Single module / in row use*

WALL WASHER

[mm]	n°. LED Mod	[K]	I LED [mA]	FLUSSO NOMINALE [lm] NOMINAL FLUX [lm]	FLUSSO REALE [lm] REAL FLUX [lm]	POTENZA [W] POWER [W]	POTENZA LED [W] POWER LED [W]	V <sub>f</sub>	CRI	SDCM	LIFETIME [Khr]
846*	3+2	3000	450+350	2626,8+1638	2454+1062	38,2	32,4	-45 + -36	≥90	≤3	>50Khr L90B5
1121/1126	4+3	3000	600+525	3494,4+2457	3272+1593	52,5	45,3	-45 + -36	≥90	≤3	>50Khr L90B5

\*Non disponibile in fila continua / *In row use version not available*



Room (m): 4x4x3h H luminaire (m): 2,5 Ref. surface: wall Wall distance (m): 1



A. A. G.  
**STUCCHI**  
Follow your illumination

# DATI TECNICI RANGE DI PRODOTTO

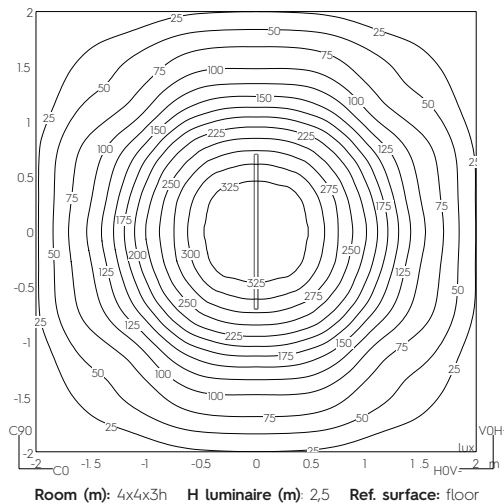
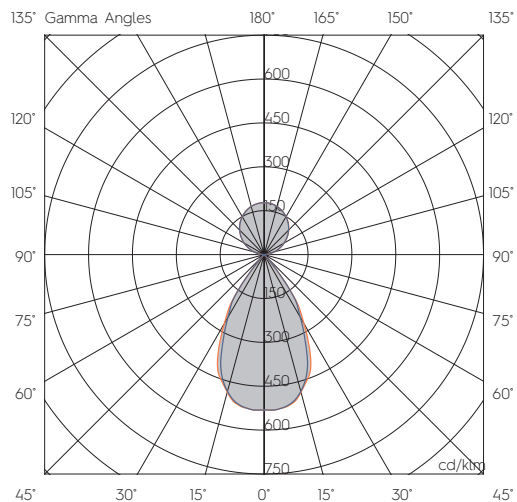
## PRODUCT RANGE TECHNICAL DATA

Modulo singolo / Fila continua BIEMISSIONE / BIEMISSION Single module / in row use

UGR H

[mm]	n°. LED Mod	[K]	I LED [mA]	FLUSSO NOMINALE [lm] NOMINAL FLUX [lm]	FLUSSO REALE [lm] REAL FLUX [lm]	POTENZA [W] POWER [W]	POTENZA LED [W] POWER LED [W]	V <sub>f</sub>	CRI	SDCM	LIFETIME [Khr]
1406*	2+4	3000	600+700	2291,3+3276	2014+2123	52,2	45	-33 + -36	≥90	≤3	>50Khr L90B10

\*Non disponibile in fila continua / In row use version not available



A. A. G.  
**STUCCHI**  
Follow your illumination