

# LIGHT INSIDE ONETRACK

Dati tecnici - L32 - Monoemissione

*L32 - Monoemission - Technical data*



A.A.G.

**STUCCHI**

Follow your illumination

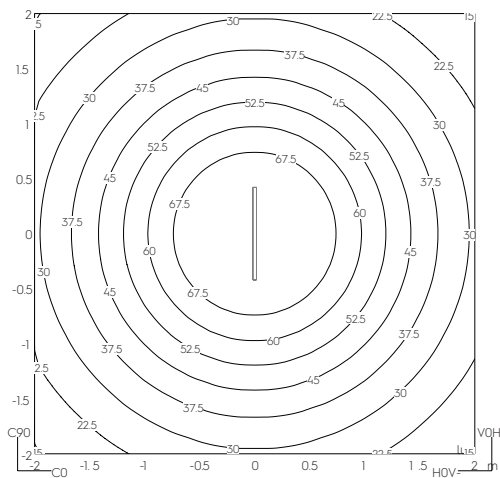
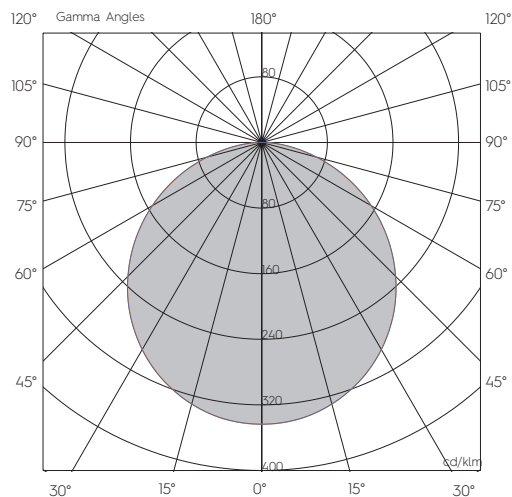
# DATI TECNICI RANGE DI PRODOTTO

## PRODUCT RANGE TECHNICAL DATA

Modulo singolo / Fila continua MONOEMISSIONE / *MONOEMISSION Single module / in row use*

OPAL

[mm]	n°. LED Mod	[K]	I LED [mA]	FLUSSO NOMINALE [lm] <i>NOMINAL FLUX [lm]</i>	FLUSSO REALE [lm] <i>REAL FLUX [lm]</i>	POTENZA [W] <i>POWER [W]</i>	POTENZA LED [W] <i>POWER LED [W]</i>	V <sub>F</sub>	CRI	SDCM	LIFETIME [Khr]
846/841	3	3000	450	2129,4	1461	19,4	15,9	-36	≥90	≤3	>50Khr L90B5
1126/1121	4	3000	600	2839,2	1948	24,9	21,2	-36	≥90	≤3	>50Khr L90B5



A. A. G.  
**STUCCHI**  
Follow your illumination



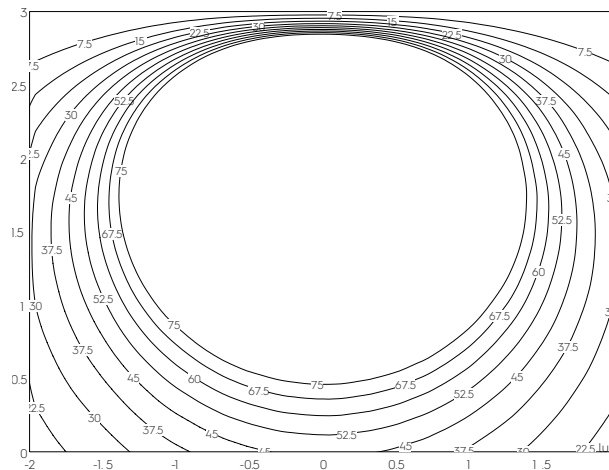
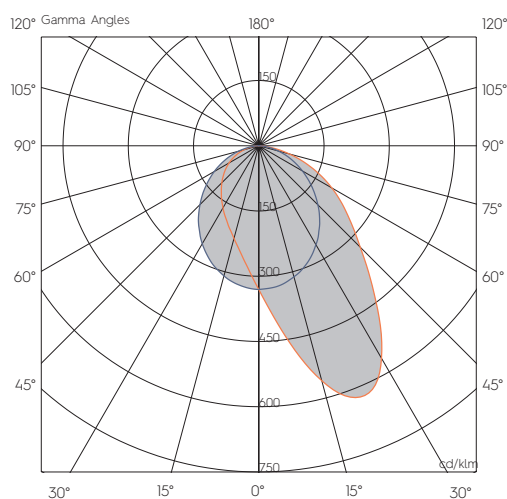
# DATI TECNICI RANGE DI PRODOTTO

## PRODUCT RANGE TECHNICAL DATA

Modulo singolo / Fila continua MONOEMISSIONE / *MONOEMISSION Single module / in row use*

WALL WASHER

[mm]	n°. LED Mod	[K]	I LED [mA]	FLUSSO NOMINALE [lm] NOMINAL FLUX [lm]	FLUSSO REALE [lm] REAL FLUX [lm]	POTENZA [W] POWER [W]	POTENZA LED [W] POWER LED [W]	V <sub>F</sub>	CRI	SDCM	LIFETIME [Khr]
846/841	3	3000	450	2620,8	2454	23,5	19,8	~45	≥90	≤3	>50khr L90B5
1126/1121	4	3000	600	3494,4	3272	30,5	26,4	~45	≥90	≤3	>50khr L90B5



Room (m): 4x4x3h H luminaire (m): 2,5 Ref. surface: wall Wall distance (m): 1



A. A. G.  
**STUCCHI**  
Follow your illumination

# DATI TECNICI RANGE DI PRODOTTO

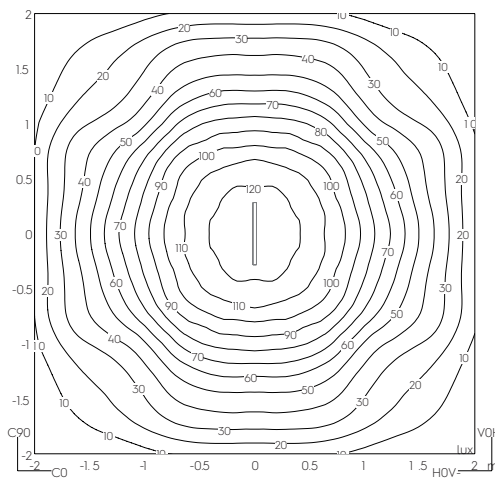
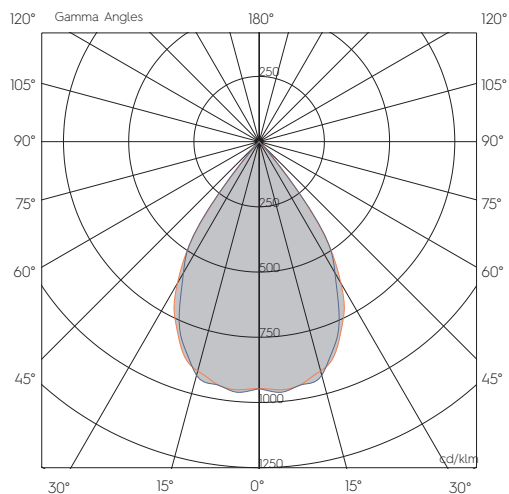
## PRODUCT RANGE TECHNICAL DATA

Modulo singolo / Fila continua MONOEMISSIONE / *MONOEMISSION Single module / in row use*

UGR<19 CRI95

[mm]	n°. LED Mod	[K]	I LED [mA]	FLUSSO NOMINALE [lm] NOMINAL FLUX [lm]	FLUSSO REALE [lm] REAL FLUX [lm]	POTENZA [W] POWER [W]	POTENZA LED [W] POWER LED [W]	V <sub>f</sub>	CRI	SDCM	LIFETIME [Khr]
566*	2	3000	500	1008,7	825	10,6	8,4	-18	≥95	≤3	>50Khr L90B10

\*Non disponibile in fila continua / *In row use version not available*



Room (m): 4x4x3h H luminaire (m): 2,5 Ref. surface: floor



A. A. G.  
**STUCCHI**  
Follow your illumination

# DATI TECNICI RANGE DI PRODOTTO

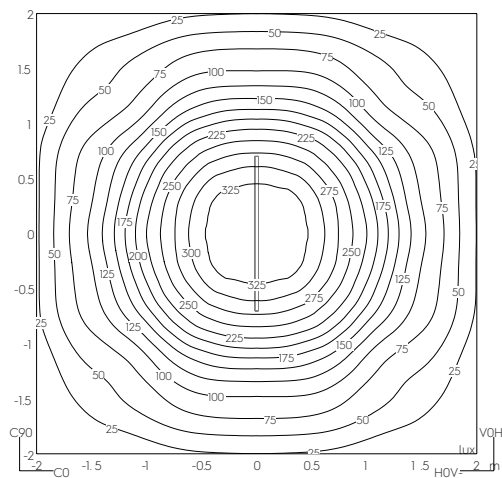
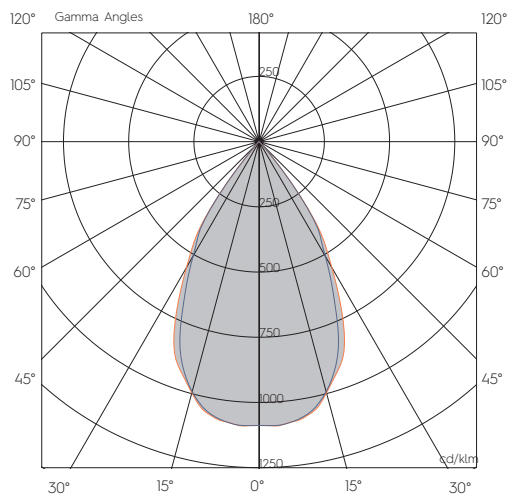
## PRODUCT RANGE TECHNICAL DATA

Modulo singolo / Fila continua MONOEMISSIONE / *MONOEMISSION Single module / in row use*

UGR<19 H CRI90

[mm]	n°. LED Mod	[K]	I LED [mA]	FLUSSO NOMINALE [lm] NOMINAL FLUX [lm]	FLUSSO REALE [lm] REAL FLUX [lm]	POTENZA [W] POWER [W]	POTENZA LED [W] POWER LED [W]	V <sub>F</sub>	CRI	SDCM	LIFETIME [Khr]
1406*	2	3000	600	2291,3	2014	23,2	19,8	~33	≥90	≤3	>50khr L90B5

\*Non disponibile in fila continua / *In row use version not available*



Room (m): 4x4x3h H luminaire (m): 2,5 Ref. surface: floor



A. A. G.  
**STUCCHI**  
Follow your illumination