

LIGHT INSIDE MICRO

Dati tecnici - M22-M

M22-M - Technical data



A.A.G.

STUCCHI

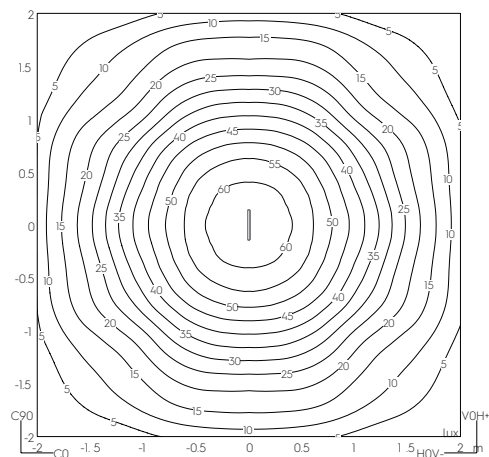
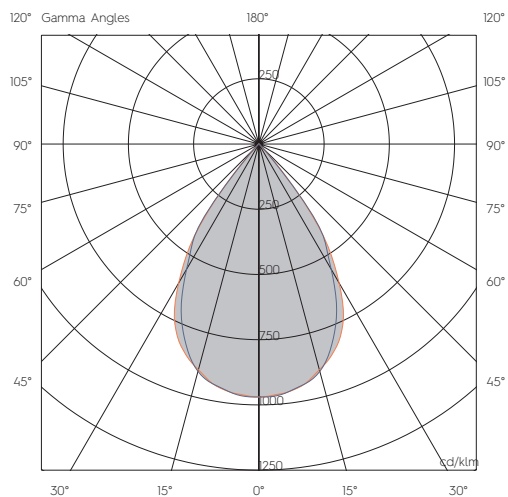
Follow your illumination

DATI TECNICI RANGE DI PRODOTTO

PRODUCT RANGE TECHNICAL DATA

UGR

[mm]	n°. LED Mod	[K]	I LED [mA]	FLUSSO NOMINALE [lm] NOMINAL FLUX [lm]	FLUSSO REALE [lm] REAL FLUX [lm]	POTENZA [W] POWER [W]	POTENZA LED [W] POWER LED [W]	V _F	CRI	SDCM	LIFETIME [Khr]
284,5	1	3000	250	504	412,9	5,4	4,2	-18	≥95	≤3	>50Khr L90B10



Room (m): 4x4x3m H luminaire (m): 2,5 Ref. surface: floor



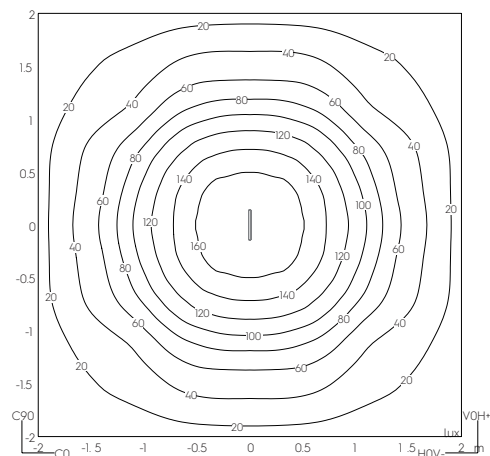
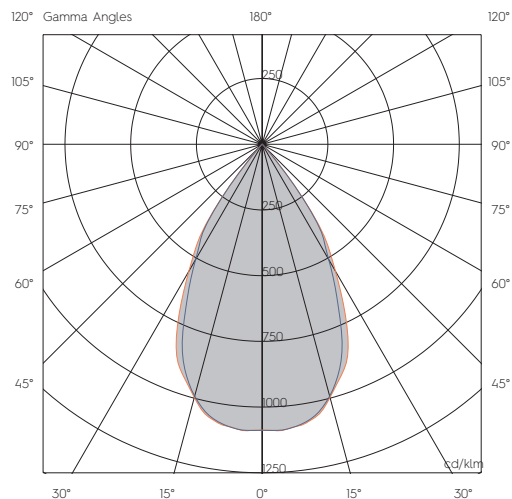
A.A.G.
STUCCHI
Follow your illumination

DATI TECNICI RANGE DI PRODOTTO

PRODUCT RANGE TECHNICAL DATA

UGR HO

[mm]	n°. LED Mod	[K]	I LED [mA]	FLUSSO NOMINALE [lm] NOMINAL FLUX [lm]	FLUSSO REALE [lm] REAL FLUX [lm]	POTENZA [W] POWER [W]	POTENZA LED [W] POWER LED [W]	V _f	CRI	SDCM	LIFETIME [Khr]
98	1	3000	600	709,4	625,2	8,8	6,9	-12	≥90	≤3	>60Khr L90B10
284,5	1	3000	300	1146	1010,7	11,2	9,9	-34	≥90	≤3	>60Khr L90B10



Room (m): 4x4x3m H luminaire (m): 2,5 Ref. surface: floor



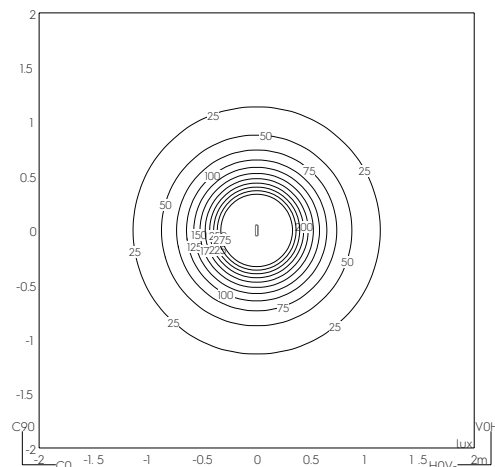
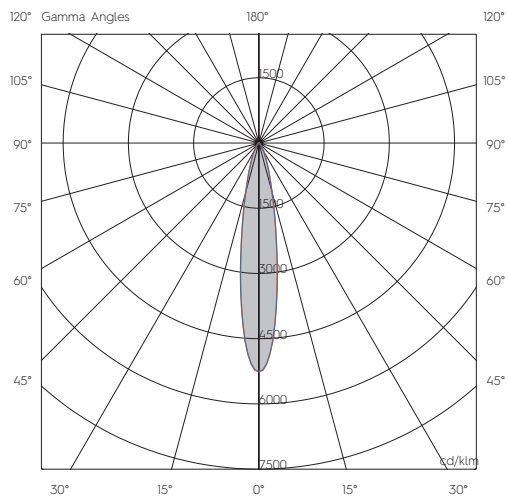
A.A.G.
STUCCHI
Follow your illumination

DATI TECNICI RANGE DI PRODOTTO

PRODUCT RANGE TECHNICAL DATA

LENS 20°

[mm]	n°. LED Mod	[K]	I LED [mA]	FLUSSO NOMINALE [lm] NOMINAL FLUX [lm]	FLUSSO REALE [lm] REAL FLUX [lm]	POTENZA [W] POWER [W]	POTENZA LED [W] POWER LED [W]	V _F	CRI	SDCM	LIFETIME [Khr]
98	1	3000	600	709	549,3	8,8	6,9	-12	≥90	≤3	>60Khr L90B10
284,5	1	3000	250	504	388,8	5,4	4,2	-18	≥95	≤3	>50Khr L90B10



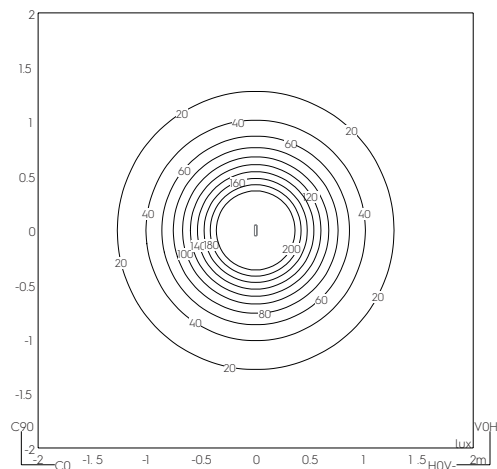
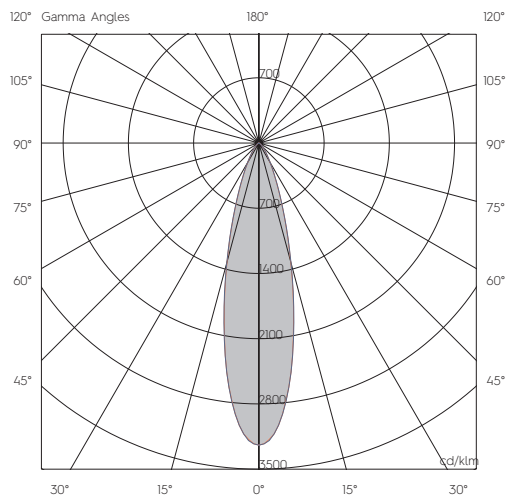
Room (m): 4x4x3h H luminaire (m): 2,5 Ref. surface: floor

DATI TECNICI RANGE DI PRODOTTO

PRODUCT RANGE TECHNICAL DATA

LENS 30°

[mm]	n°. LED Mod	[K]	I LED [mA]	FLUSSO NOMINALE [lm] NOMINAL FLUX [lm]	FLUSSO REALE [lm] REAL FLUX [lm]	POTENZA [W] POWER [W]	POTENZA LED [W] POWER LED [W]	V _F	CRI	SDCM	LIFETIME [Khr]
98	1	3000	600	709	528,4	8,8	6,9	-12	≥90	≤3	>60Khr L90B10
284,5	1	3000	250	504	413,8	5,4	4,2	-18	≥95	≤3	>50Khr L90B10



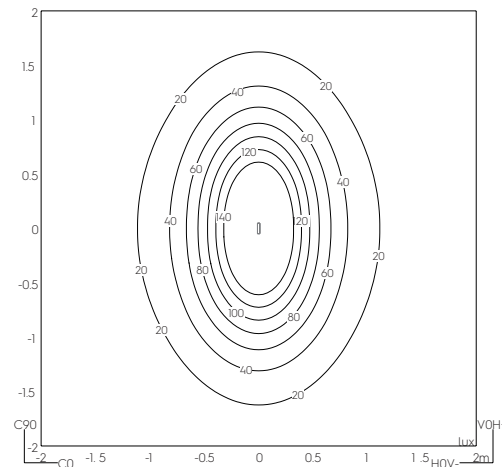
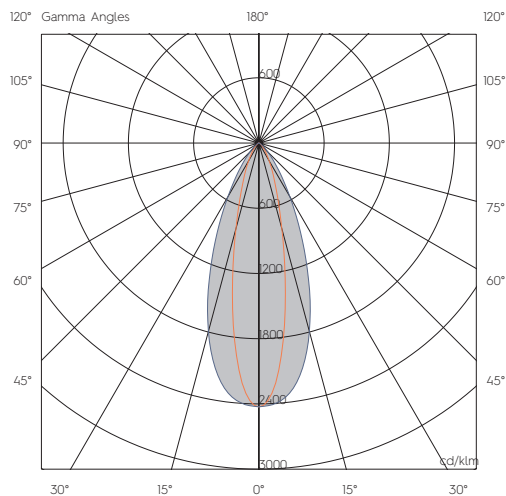
Room (m): 4x4x3h H luminaire (m): 2,5 Ref. surface: floor

DATI TECNICI RANGE DI PRODOTTO

PRODUCT RANGE TECHNICAL DATA

LENS 26°x42°

[mm]	n°. LED Mod	[K]	I LED [mA]	FLUSSO NOMINALE [lm] NOMINAL FLUX [lm]	FLUSSO REALE [lm] REAL FLUX [lm]	POTENZA [W] POWER [W]	POTENZA LED [W] POWER LED [W]	V _F	CRI	SDCM	LIFETIME [Khr]
98	1	3000	600	709	528,4	8,8	6,9	-12	≥90	≤3	>60Khr L90B10
284,5	1	3000	250	504	358,3	5,4	4,2	-18	≥95	≤3	>50Khr L90B10



Room (m): 4x4x3h H luminaire (m): 2,5 Ref. surface: floor



A. A. G.
STUCCHI
Follow your illumination